

Anti-PEG IgE Detection Kit

Datasheet

Introduction

The FocalTuning™ DCBA Human Anti-PEG IgE Kit (Catalog No. LLTPK-000E) can be used to quantitatively measure anti-PEG IgE antibody levels in a single plasma or serum sample. The kit performance has been optimized for analysis of specific human anti-PEG IgE in plasma and serum samples. The kit provides sufficient reagents for the quantitative analysis of 25 samples (75 tests, other sizes available too).

Principal of the assay

FocalTuning™ DCBA assays is a patented technology providing a method of specifically detect a soluble analyte by accurately removing background binding signals. Each capture and control bead in the kit has been conjugated with a specific antibody but only capture bead captured target which can specifically bind to the analyte while the control beads were inactivated. The detection reagent provided in the kit is a mixture of phycoerythrin (PE)-conjugated antibodies, which provides a fluorescent signal in proportion to the amount of bound analyte.

Two bead populations with distinct fluorescence intensities have been coated with capture antibodies specific for PEG. The capture bead further captured with PEG while the control bead was blocked. Only the capture bead can bind with anti-PEG antibodies in human serum or plasma samples. The Human Anti-PEG IgE kit measures specific anti-PEG IgE by comparing the detection signal of the capture bead vs. control bead. The two bead populations are mixed together to form the bead array, which is resolved in a red channel of a flow cytometer (see Figure 1).

During the assay procedure, you will mix the capture beads and control beads with standards (chimeric anti-PEG IgE) or test samples (plasma or serum), incubate, wash, and then incubate with the PE- conjugated detection antibodies to form sandwich complexes. After acquiring samples on a flow cytometer, use FlowJo or appropriate flowcytometry software to generate results in graphical and tabular format.

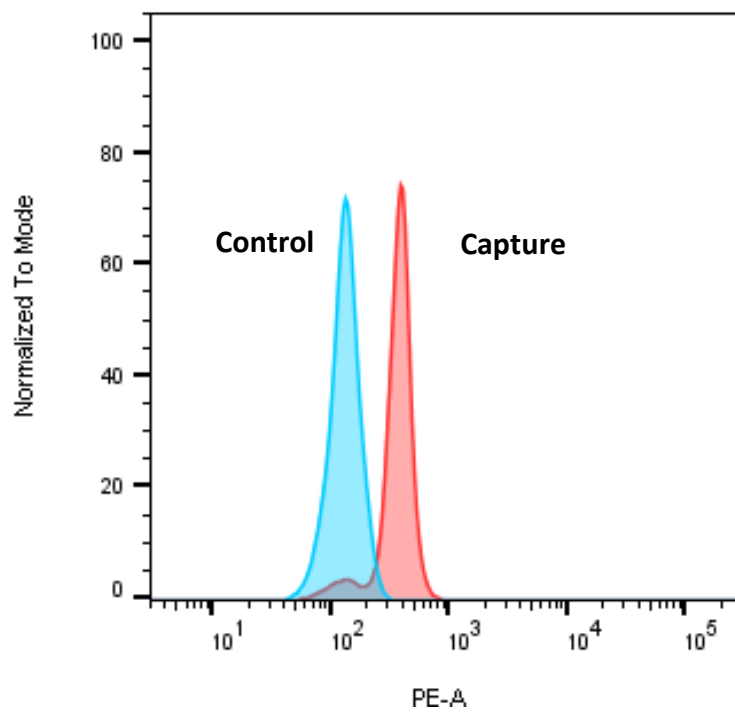
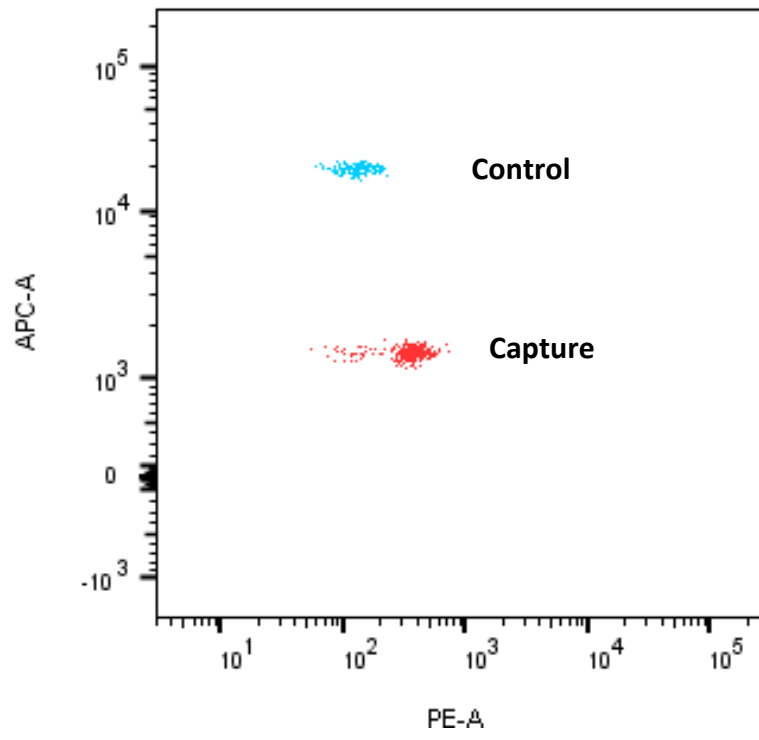


Figure 1

Product Specifications

- **CATALOG NUMBER:**
LLTPKLLTPEG-000E
- **DETECTION METHOD**
Flow Cytometry
- **PRECISION**
Intra-assay coefficient of variation (CV) <10%. Inter-assay CV was <10%
- **DETECTION LIMIT**
0.4ng/ml
- **STORAGE CONDITIONS**
Standard, positive and negative control serum (-20°C), rest Stable at 4°C for 6 months.
- **SAFETY WARNINGS AND PRECAUTIONS**
Research Use Only. Follow instructions.
- **EACH KIT INCLUDES**
Human anti-PEG Capture Beads; Human anti-PEG Control Beads; Human Anti-PEG IgE Detection Reagent; Human Anti-PEG IgE Detection Reagent 2; Human Anti-PEG IgE Detection Reagent 3; Cytometer Setup Beads; PE Positive Control Detector; Human Anti-PEG IgE Standards; Human Anti-PEG IgE positive control; Human Anti-PEG IgE negative control; Wash Buffer; Assay Diluent